

SINGLE DETACHED FACTORY WITH 2 STOREY OFFICE

Land Area: approx. 20,785 sq. ft.
Built-up Area: approx. 10,773 sq. ft.



KD285 @ KUNDANG FREEHOLD

GRD FLOOR
7,879 SQ. FT.

1ST FLOOR
1,447 SQ. FT.

2ND FLOOR
1,447 SQ. FT.



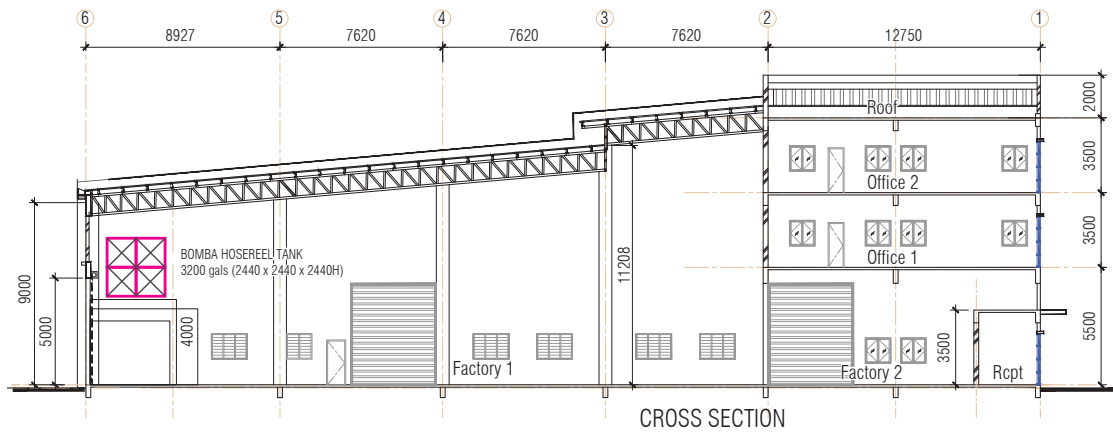
SMDGROUP
Building Better Future

ANOTHER INDUSTRIAL
DEVELOPMENT BY
SMD GROUP

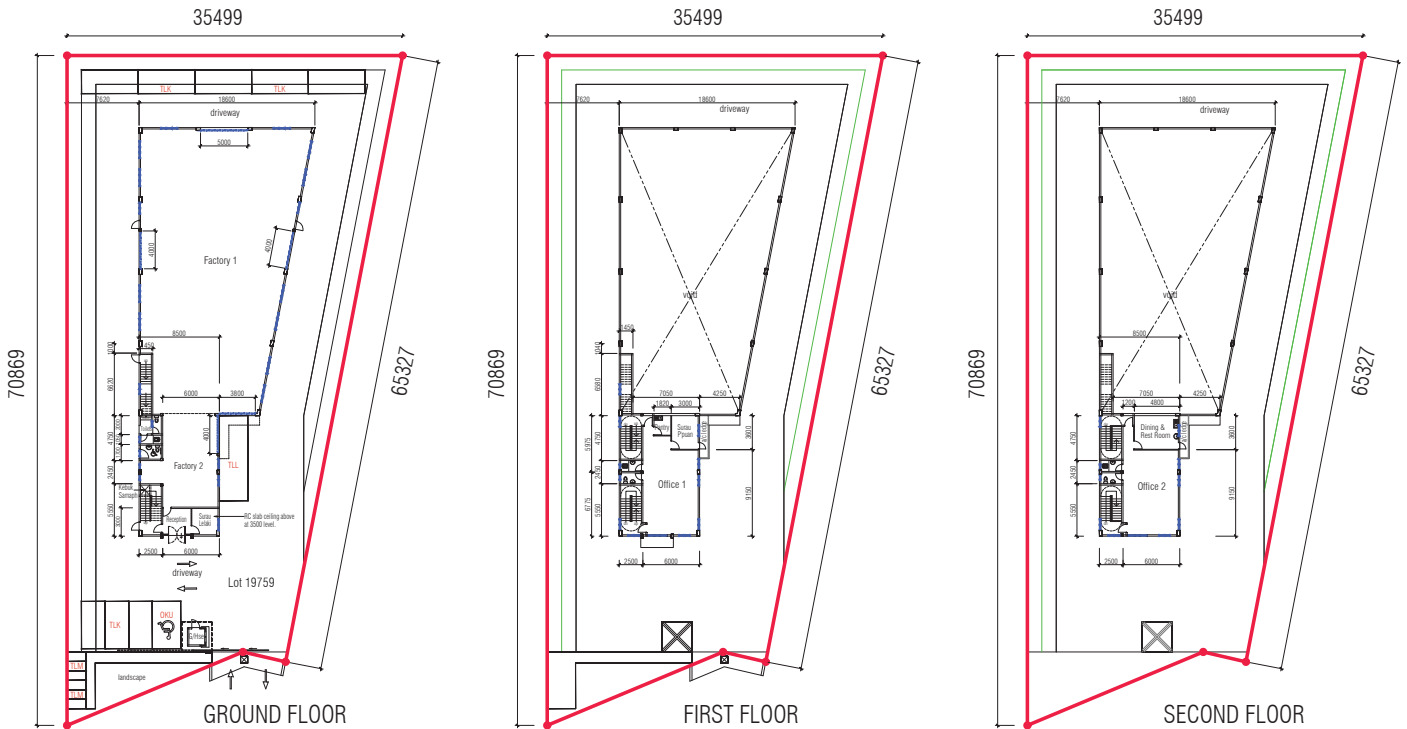
www.smdgroup.com.my



- **PRIME & STRATEGIC LOCATION**
- **LOCATED IN KUNDANG INDUSTRIAL PARK**
- **5 MINUTES TO PLAZA TOLL**
Rawang Selatan to LATAR / Guthrie & NKVE Expressways



CROSS SECTION



GROUND FLOOR

FIRST FLOOR

SECOND FLOOR

SPECIFICATIONS

FOUNDATION	: RC FOOTING
STRUCTURE	: REINFORCED CONCRETE
ROOFING	: METAL DECK ROOFING SHEET
CEILING	: FIBREGLASS PLASTER BOARD OR EQUIVALENT CEMENT PLASTER SKIM COATING WITH EMULSION PAINT TO CONCRETE SLAB SOFFIT.
WALLS	: MASONRY BRICKS
DOORS	: 1 HOUR RATED FIRE DOOR PLYWOOD FLUSH DOOR ALUMINIUM FRAME GLASS PANEL DOOR
WINDOWS	: ALUMINIUM FRAME WINDOW METAL FRAME FIXED / ADJUSTABLE GLASS LOUVRES
FLOOR FINISHES	: GROUND FLOOR
	FACTORY - POWER FLOAT CEMENT FLOOR
	TOILETS - CERAMIC TILES
	1st & 2nd. FLOOR
	OFFICE - CERAMIC TILES
	TOILETS - CERAMIC TILES
	PANTRY - CERAMIC TILES
	OTHERS AREA - CEMENT RENDER
WALL FINISHES	: GROUND FLOOR
	TOILETS - 2100 HIGH GLAZED WALL TILES
	OTHERS AREA - PLASTER WITH EMULSION PAINT
	1st & 2nd. FLOOR
	TOILETS - 2100 HIGH GLAZED WALL TILES
	OTHERS AREA - PLASTER WITH EMULSION PAINT
SANITARY INSTALLATION	: WATER CLOSET - 6 NOS
	WASH BASIN - 6 NOS
	WATER TAP POINT - 8 NOS
	ALUMINIUM SINK - 2 NOS
ELECTRICAL INSTALLATION	: LIGHTING POINT - 75 NOS
	COMPOUND LIGHTING - 8 NOS (wall mounted)
	13 AMP POWER POINT - 72 NOS
	FAN POINT - 4 NOS
	A/C POINT - 5 NOS
	TELEPHONE - 9 NOS
	DATA POINT - 9 NOS.
POWER SUPPLY	: 150 - 200 AMPS (subject to TNB's available)